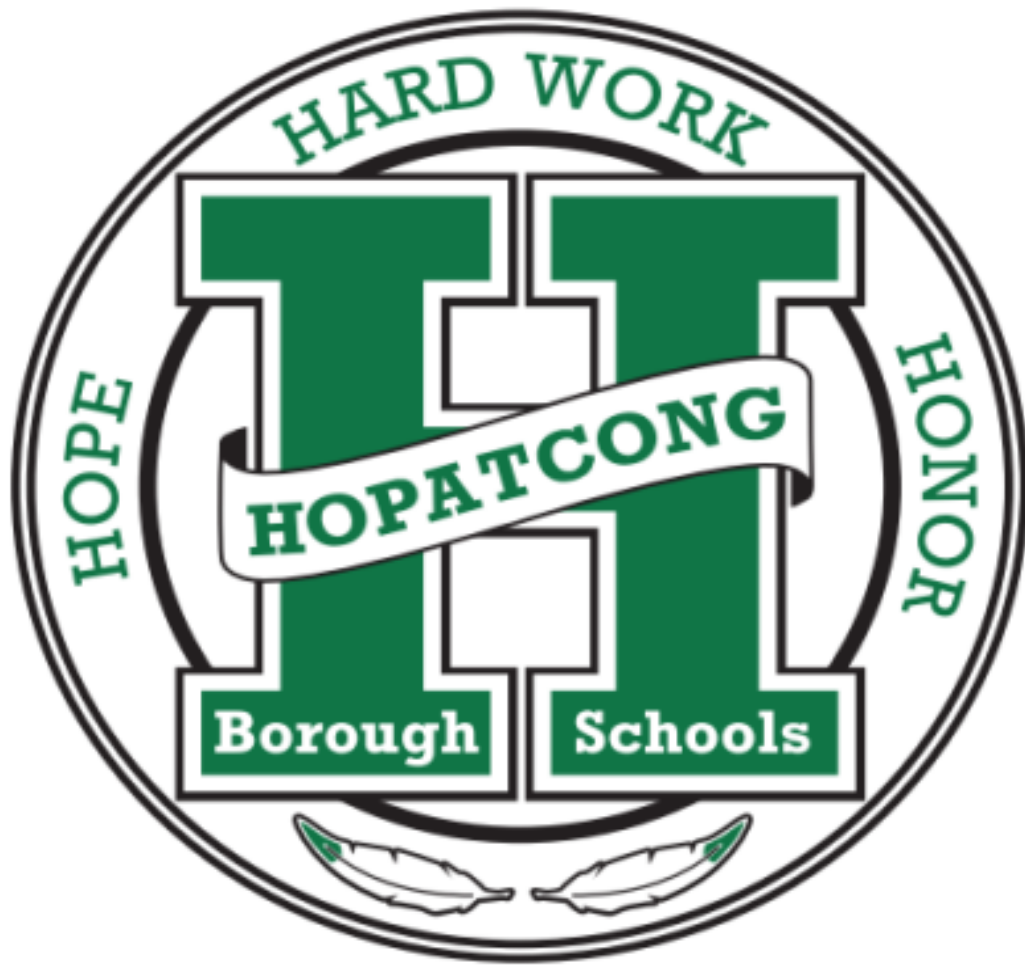


HOPATCONG HIGH SCHOOL



Student Handbook Grade 8 2024-2025

Table of Contents

Philosophy	4
Safety Zones	4
Map of Drug Enforcement Area	5
High School Schedule	6
District Calendar	7
School Closings	7
Toll Free Hotlines and Local Information	8
School District Personnel	9
High School Faculty	10
Disability Service Coordinator	11
Affirmative Action	11
Educational Equity Policies	11-12
<u>Attendance</u>	13-18
Attendance Policy	
Protocols and Procedures Concerning Absences from School	
Late to School	
Signing out of School (early)	
Scheduled Early Dismissal Policy	
College Visitations	
Truancy	
Vacation Leave Policy	
Make-Up Work (due to extended absence)	
Cutting	
Late to Class	
Bathroom Pass/E-hall Pass	
Denial of Course Credit for Attendance Reasons/Appeals/Truancy	
Cutting/Signing Out of School Early/ Lateness to School	
<u>Code of Conduct</u>	19-29
Classroom/cafeteria and Hallway Behavior	
Detentions	
Suspensions	
Profanity	
Harassment/Intimidation/Bullying	
Hate crimes and Bias related acts	
Public Displays of Affection	
Water Coolers/Fountains	
Care of School Property and Vandalism	
Internet/Computer Abuse	
School Bus Regulations	
Electronic Devices/Phones/Earbuds	
Fighting/Physical Assaults/Altercations	
Cheating/Plagiarism	
Student ID Cards	

E-Hall Pass
Loss of Privileges
Weapons
Theft

General Information

30-35

Study Hall
Physical Education (P.E.) Classes and the Gym
Late Buses
Building Security/Electronic Surveillance/Cameras
Student Parking/Driving Privileges
Lockers
Student Search and Right To Privacy
Prom
Food and Beverages in the Hallway
Medication
Health Services/School Nurse
Dress Code Regulation
Library Media Center Services/Technology Center
Chromebook Initiative
Visitors/Guests
Cafeteria Services
Fire Drills/Security Drills
Procedures for Completion of Working Papers

Substance Abuse/Smoking

36-37

Student Suspected Under the Influence of Substances
Random Drug Testing
Smoking/Vaping

Academics, Counseling and Guidance Services

38-43

Home Instruction
Homework Requests
Guidance Appointments
Change of Address and Telephone Number
Drop/Add Policy
Level Changes
Record Keeping/Promotion
Career Information
College Course/Grade 12 Option/Online Courses (Option II)
Extra Academic Assistance
Computing Grades
Grade Point Average
Incompletes
Grade Reporting
Marking Period Dates
Progress and Deficiency Reports
Honor Roll
Final Examinations
Examination Exempt Policy
Honors Courses/Advanced Placement/CC Courses and Class Rank
Graduation Requirements

Physical Education Medical Excuse
Summer School/Credit Recovery
Scheduling
Rights of Emancipated Students
Student Records and Transcripts

Student Activities

44-45

Athletics and Co-Curricular Activities
National Honor Society Selection Procedure
NCAA Clearinghouse
Student Eligibility for Participation in Extracurricular Activities and Athletics

Substance Abuse Policy for Athletics/Activities in Addition to Code of Conduct Penalties

Alma Mater

46

PHILOSOPHY

Hopatcong High School provides all students with multiple opportunities for intellectual and social growth, life-long learning, responsible citizenship and productive employment.

HOPATCONG HIGH SCHOOL GOALS:

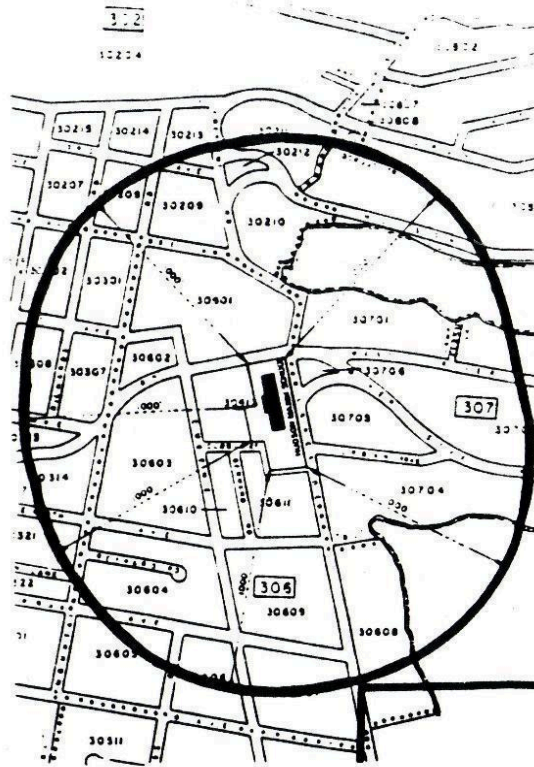
1. To establish a safe environment, conducive to a productive educational environment.
2. To address the physical, social, emotional and cognitive needs of all students.
3. To motivate students to achieve high academic standards.
4. To engage in a culturally rich and diverse society with positive interpersonal relationships.
5. To support the use of technology in order for students to meet their academic goals.
6. To involve the community as a partner in the learning process.

SAFETY ZONES

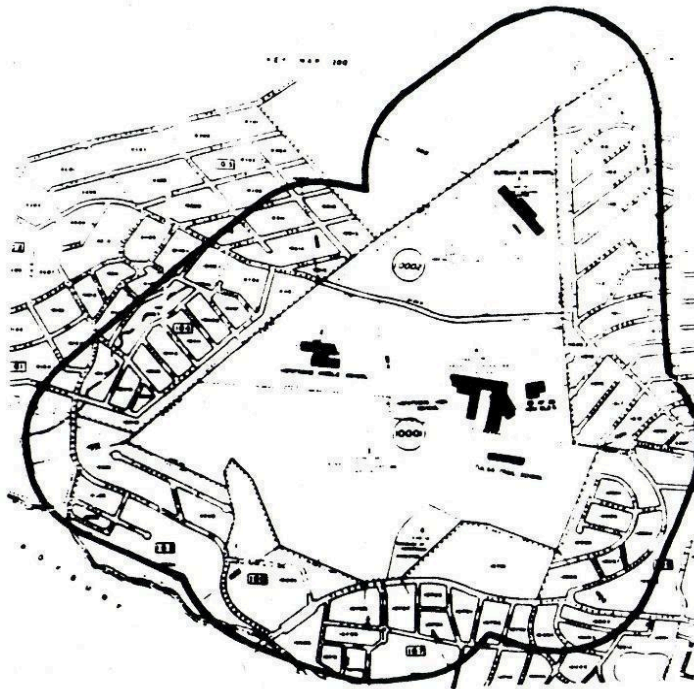
“Safety Zones” are established by [N.J.S.A. 2C:35-7](#) and are posted by local law-enforcement officials. Maps of the safety zones surrounding the schools appear on the next page.

“Any person who violates subsection a. of [N.J.S.2C:35-5](#) by distributing, dispensing or possessing with intent to distribute a controlled dangerous substance or controlled substance analog while on any school property used for school purposes which is owned by or leased to any elementary or secondary school or school board, or within 1,000 feet of such school property or a school bus, or while on any school bus, is guilty of a crime of the third degree” and shall be sentenced accordingly as per statute.

Students are advised that these penalties are established by statute, and are in addition any School District discipline which may include suspension, expulsion or other penalty imposed by the District.



MAP OF DRUG ENFORCEMENT AREA



MAP OF DRUG ENFORCEMENT AREA

High School Time Schedule

Periods	HS Time Schedule
Bell	7:20
Pledge	7:25-7:26
1	7:26-8:10
2	8:14-8:58
3	9:02-9:46
HR	9:46-9:49
4	9:53-10:37
5	10:42-11:26
6	11:31-12:15
7	12:20-1:04
8	1:09-1:55 (PM Announcements)
Detention	2:15-3:45

Periods	High School Delayed Opening
Bell	9:20
HR	9:25-9:27
1	9:27-9:57
2	10:01-10:31
3	10:35-11:05
4	11:09-11:39
5	11:43-12:13
6	12:17-12:47
7	12:51-1:21
8	1:25-1:55
Detention	2:15-3:45

Periods	HS Early Dismissal
Bell	7:20
Pledge	7:25-7:27
1	7:27-7:53
2	7:57-8:23
3	8:27-8:53
HR	8:53-8:56
4	9:00-9:26
5	9:31-9:57
6	10:02-10:28
7	10:33-10:59
8	11:04-11:30
	(No Detention)

2024-2025 District Calendar

September, 2024	2	District Closed - Labor Day
	3-4	Schools Closed/Teacher In-Service
	5	First Day for Students
October	14	Schools Closed/Teacher In-Service - Columbus Day
November	7-8	Schools Closed - NJEA Convention
	27	Early Dismissal
	28-29	District Closed - Thanksgiving Recess
December	20	Early Dismissal
	23-31	District Closed - Winter Recess
January 2025	1	District Closed - New Year's Holiday
	20	Schools Closed/Teacher In-Service - MLK Jr Day
February	17	District Closed - Presidents Day
March		
April	14-18	School Closed – Spring Recess
May	26	District Closed - Memorial Day
June	18	Last Day for Students

The above calendar reflects 180 student school days with 4 built-in snow days into the schedule. If more than 4 snow days are used, April/Spring Recess will be revised. If less than 4 snow days are used, the additional days off will be:

1. April 21
2. May 23
3. May 27
4. April 11

SCHOOL CLOSINGS

During the school year it may be necessary to close schools on one or more days due to ice, snow or other storm conditions which make school bus travel hazardous. Blackboard Connect will be used to notify parents of school closings/delayed openings on snowy or icy mornings.

Parents should check the website and subscribe to Blackboard in order to receive messages.

TOLL-FREE HOTLINES AND LOCAL INFORMATION

Addictions Hotline of NJ	1-844-276-2777
Sussex County Council on Alcohol	1-973-940-5200 Ext. 1383
Child Abuse/ Neglect Hotline	1-877-652-2873
Division of Youth & Family Services	1-973-383-8400
Domestic Violence	1-800-572-7233
Emergency-Newton Hospital	1-973-579-8500
Center for Mental Health- Newton	1-973-383-1533
Narcotics Anonymous NJ Hotline	1-800-992-0401
Planned Parenthood Services	1-973-383-5218
Poison Control Hotline	1-800-222-1222
Prosecutor's Office	1-973-383-1570
National Runaway Safe line	1-800-RUNAWAY
Sex Assault Program (Sussex)	1-973-875-1211
Spouse Abuse and Sexual Assault Services	1-973-579-2386
State Police	1-973-663-3400
Suicide Hotline	988
Welfare	1-973-383-3600
State Police School Safety Hotline	1-877-624-8082

HOPATCONG SCHOOL DISTRICT PERSONNEL

BOARD OF EDUCATION

Mrs. Nicole Falconi-Shubert , President	Mrs. Jennifer Polowchena Vice President
Dr. Natalia Cappello	Mr. James Chaffee
Mr. Jayson Cittrich	Mr. Philip DiStefano
Mr. Joseph Falconi	Mr. Scott Francis
Mrs. Jayna Gulan	

CENTRAL OFFICE PERSONNEL

Mr. Jeffrey Hallenbeck	Superintendent of Schools	973-770-8844
Mr. Matthew Robinson	Asst. Superintendent for Curriculum	973-770-8845
Mrs. Brittany Huling	Admin Asst. to the Superintendent	973-398-8808
Mrs. Tammy Miller	Director of Special Services	973-770-8821
Mr. Gregory Smyth	Facilities Manager	973-770-8840

HIGH SCHOOL PERSONNEL

Mrs. Stephanie Martinez	Principal	973-770-8850
Mrs. Nicole Gerena	Secretary to the Principal	973-770-8851
Mr. Mark Certo	Coordinator of Student Discipline	973-770-8849
Mr. Peter Oesen	Coordinator of Student Activities	973-770-8970
Mrs. Christine Amella	Secretary to Coordinator of Student Activities and Discipline	973-398-8803
Mrs. Stacy Yanko	Guidance Secretary	973-770-8861

HIGH SCHOOL SUPPORT SERVICES

Ms. Wendi Braun	School Counselor	973-770-8862
Mrs. Michelle Iannuzzi	School Counselor and Student Assistance Coordinator	973-770-8864
Ms. Melissa Stein	School Counselor	973-770-8863
Mr. Jim Valentine	School Counselor	973-770-8865
Mrs. Lynn Masterson	Attendance	973-770-8854
Mrs. Ashley Zaremba	School Nurse	973-770-8855
Mr. Christopher Bove	Athletic Trainer	973-770-8983
Officer Marlon Winbush	School Resource Officer	973-770-8830

CHILD STUDY TEAM

Ms. Amanda Michko	School Social Worker	973-770-8825
Mrs. Susan Pallotta	School Social Worker	973-770-8858

HIGH SCHOOL FACULTY

<u>ART</u>	<u>Health/Physical Education</u>	<u>Science</u>
Jon Rischawy	Austin Brown	Mary Burns
George Segale	Paul Miller	Jim McDonald
	Jill Mortenson	Peter Oesen
<u>Business/Technology</u>	Michael Stec	Dominic Schiavone
James McKowen		Eric Shramko
Mike Juskus	<u>History/Social Studies</u>	
	David Campagna	<u>Special Education</u>
<u>Cosmetology</u>	Heather DelBagno	Eileen Baum
Dorothy Cordero	Yvonne Mortello	Karen Cubberly
	McKenzie Norris	Wilson Cusano
<u>English</u>	Craig Vallaro	Traci Duffy
Christine Kalemba		Dina Emerling
Jason Mulvihill	<u>Library Media Specialist</u>	Michael Farrell
Barbara Parichuk	Elissa DeRose	McKenzie May-Ortiz
Irene Paxos		Christina Nied
Laura Tykowski	<u>Math</u>	McKenzie Norris
	Nancy Duffy	Ken Olsen
<u>ESL</u>	Megan Nardone	Melanie Piereth
Carla Malatesta	Neil Pallotta	Emily Taylor
Alexa McLean	Kelcey Russo	Loren Turner
		Julie Wilson
<u>Family Consumer Science</u>	<u>Music</u>	
Sharon Haggerty	Albert Cerulo	<u>World Language</u>
	Kristen O'Shea	Carmen Alzate
<u>Job Coach</u>		Carla Malatesta
Hank Fattorusso		

DISABILITY SERVICE COORDINATOR

The Disability Service Coordinator provides parents/guardians with information regarding the services that are available through state agencies for persons with disabilities. The coordinator also assists parents/guardians in accessing the appropriate State agency.

If you have any questions, please contact Mrs. Tammy Miller, Director of Special Services - 973-770-8821, tmiller@hopatcongschools.org.

AFFIRMATIVE ACTION

The Hopatcong School District maintains an established procedure for processing complaints regarding discrimination and affirmative action concerns. This procedure was developed in accordance with the New Jersey State Department of Education's guidelines for handling complaints regarding sex, race, religion, etc.

Such complaints can arise from working conditions or school and classroom practices. Any individual who wishes to process a complaint regarding discrimination should pick up an Affirmative Action Grievance Filing Form from the District Administrative Building or by contacting the district's Affirmative Action Officers:

1. Mr. Matt Robinson, Assistant Superintendent, 973-770-8845, mrobinson@hopatcongschools.org

Completed forms should then be filed according to the following:

- Level 1 - Building Principal
- Level 2 - The Affirmative Action Officer
- Level 3 - The Hopatcong Board of Education

If a complaint is not resolved by Level 3, it should then be referred to the County Superintendent of Schools for review and/or processing by other appropriate agencies. When the complaint is processed with the County Superintendent, it becomes an official matter

EDUCATIONAL EQUITY POLICIES

The Hopatcong Borough School District has adopted and implemented written educational equity policies that:

1. Recognize and value the diversity of persons and groups within the society and promote the acceptance of persons of diverse backgrounds regardless of race, creed, color, national origin, ancestry, age, marital status, affectional or sexual orientation, gender, religion, disability, or socioeconomic status.
2. Promote equal educational opportunity and foster a learning environment that is free from all forms of prejudice, discrimination, and harassment based upon race, creed, color, national origin, ancestry, age marital status, affect or sexual orientation, gender, religion, disability or socioeconomic status in the policies, programs and practices of the district board of education.

The Hopatcong Borough Public School District complies with all applicable laws, codes, regulations, and guidelines governing equity in education including, but not limited to: N.J.S.A.18A:36-20; N.J.S.A.10:5; N.J.A.C. 6A:7; Guidelines for the Desegregation of Public Schools in New Jersey (1989); Titles VI and VII of the Civil Rights Act of 1964; Title IX of the Education Amendments of 1972; Section 504 of the Rehabilitation Act of 1973; The Americans with Disabilities Act of 1990; Individuals with Disabilities Education Act (I.D.E.A.) of 1997.

The Hopatcong Board of Education's policies prohibiting bias, harassment, discrimination, segregation and ensuring equality in educational programs and the Hopatcong School District's Comprehensive Equity Plan, grievance procedure, and annual reports are available to members of the community, the staff and students from Mr. Jeffrey Hallenbeck, Superintendent of Schools - 973-770-8844, jhallenbeck@hopatcongschools.org.

Mrs. Tammy Miller, Director of Special Services, serves as the Hopatcong School District's coordinator for matters concerning 504. She can be reached at 973-770-8821, tmiller@hopatcongschools.org.

Administration Building

2 Windsor Avenue

P.O. Box 1029

Hopatcong, NJ 07843

(973) 770-8821

Board policies can be accessed for your review at this [link](#).

I. ATTENDANCE AND TIME IN CLASS

Research clearly shows that students who attend school regularly have been shown to achieve at higher levels, not only academically, but socially and physically as well. Children will learn and become productive young adults when they feel valued, safe and happy in engaging programs. However, in order for students to be successful, students need to be present and **on time** to school. Frequent absences, late arrival to class and excessive time out of the classroom means less instruction and missed opportunities for intervention, reinforcement and enrichment. While missing a couple of days a month may not seem like a lot, it can add up to a child becoming chronically absent or truant. **PLEASE NOTE - Hopatcong High School will hold all students and parents legally accountable for student attendance, including referrals to Municipal Court for Truancy as per [N. J.A.C. 6A:16-7.6\(a\)4](#).**

1. ATTENDANCE (POLICY [#5200](#))

Hopatcong High School is responsible for reporting chronic absenteeism (missing 10 percent or more of the school year) and [truancy](#) (10 or more cumulative *unexcused* absences) as defined in N.J.A.C. 6A:16-7.6 (For more detailed information concerning the legality of absences, please see Board [Policy](#) and [Regulation 5200](#)). If a child becomes chronically absent or truant, the Hopatcong School District will conduct a home visit by the school safety officer, and an official designee of the district. The purpose of the visit is to emphasize the importance of attendance, and to provide families with guidance on how to communicate this message to the student.

2. PROTOCOLS AND PROCEDURES CONCERNING ABSENCES FROM SCHOOL (POLICY [#5200](#))

Attendance is taken each day, not only at the beginning of school, but at the beginning of EVERY class. Please keep the following in point mind:

1. In the event your child will be absent from school, please call or email Mrs. Lynn Masterson in the attendance office (973-770-8854, lmasterson@hopatcongschools.org). To ensure that your child is safe and accounted for, and that your child's absence is recorded properly, please state the reason and projected length for the absence.
2. When your child returns to school, please provide documentation if applicable, which will be kept in a file in the event there is a credit recovery appeal (see [Denial of Course Credit](#) and [Appeals](#)). Absences that are not cleared by the next day will be recorded as an unauthorized absence from school. **PLEASE NOTE - Absences from school that are not verified by a parent to the attendance office, either by email or phone call, count as Unexcused Absences towards the 15/7 Rule (see [Denial of Course Credit](#)) and may result in the loss of course credit, delayed promotion or graduation, possible legal referral to Municipal Court for truancy, participation in trips, activities and other privileges at the discretion of the administration.**
3. Students attending or participating in extracurricular activities must be present in school in order to participate in a school sponsored function that same day, unless attending a funeral, or a doctor's appointment. In those cases, students are expected to be present for a part of the school day within reason. For more clarification, please see the Principal or Coordinator of Student Discipline. *An absence on a Friday* would result in a student being ineligible for the subsequent weekend sponsored events.

4. According to [N.J.A.C. 6A:32-8.3](#), the New Jersey Department of Education defines a school day in session as “a day in which the school is open, and students are under the guidance and direction of a teacher(s); and the day must be **four (4) hours or more to be considered a full day**”. *This is of special note to the students participating in athletics and extracurricular activities.*
5. Additionally, applicable students must be in attendance at school before 9:55 a.m. or until 11:28 a.m. in order for their school day to count as per the four (4) hour definition. Students not adhering to this school code will not be allowed to participate in the activity including (this includes ALL clubs, activities, stage/band productions, etc.) unless excused by the high school administration.
6. Club advisors will take attendance at extracurricular events and activities and are responsible for reporting absences appropriately and responsibly to the high school administrative team.

3. LATE TO SCHOOL

Students are expected to be in school **before 7:20**, to give themselves enough time to be ready for Period 1 (the first period of instruction) which begins promptly at 7:25 a.m. Although we understand that this is early, and that many of our working age students may hold jobs that require working nights, and/or students may be involved in activities that occur at night, all students are expected to be **on time for school**. Most of life’s events, whether educational, professional or social are predicated on a start time and school is no exception. **PLUS - it is disruptive to teachers and students that have started the learning process on time.**

Students that arrive at school AFTER 7:20 must enter through the front entrance. Students who report to school after 7:25 a.m. will sign into the Attendance Office through the main entrance. A pass will be provided to enter the period 1 class. However, students arriving to school late:

- 2 times will result in warnings (documented).
- The 3rd will result in a parent email home explaining the consequences.
- The 4th will result in an absence recorded against the 15 Absence Policy.
- The cycle will continue accordingly.
- Additionally, the 8th, 12th and every 4th thereafter will result in Central Detention (after school) until the 15th class absence has been reached. At that time, a student is in danger of losing **participation in trips, activities and other privileges at the discretion of the administration.**
- Students arriving late to school **will not be allowed to bring in beverages or food in bags or cups from restaurants** to avoid the appearance of being late to school due to stopping for food or beverages.

4. SIGNING OUT OF SCHOOL EARLY (POLICY [#5230](#))

Students requiring early dismissal for a permissible reason, (such as court appointment, doctor visit, college visit, etc.) must adhere to the following:

1. Students must bring a signed parental note on the day of dismissal to the Attendance Office **in advance**. The note must include a **telephone number** where a parent can be reached for verification purposes. Alternatively, a parent may send an email from a parent email address on file, but must also include a **phone number** where a parent can be reached for verification purposes.
2. A **note confirming the student appointment must be presented to the office** upon return to school.
3. As per Board Policy [#5230](#), **no** student will be dismissed without a signed parental note and phone call presented in advance and which states the reason for early dismissal.

4. A parent/guardian will be required to personally sign their child out of school from the main office.
NOTE - no one may sign a student out of school if that adult is not listed in the emergency contact section of Powerschool.
5. Absences resulting from early dismissal count and may or may not be excused per regulation [#5200](#).
6. Students may not sign out to go home, or patronize food establishments off-campus, or anything similar. Only approved reasons will be considered.

5. SCHEDULED EARLY DISMISSAL SIGN OUT POLICY (NOT APPLICABLE FOR GRADE 8)

6. COLLEGE VISITATIONS (NOT APPLICABLE FOR GRADE 8)

7. TRUANCY (REGULATION [#5200](#))

Truancy is defined by the NJ Department of Education as 10 or more cumulative **unexcused absences** ([N.J.A.C. 6A:16-1.3](#)). For cumulative unexcused absences of ten or more, a student between the ages of six and sixteen is truant, pursuant to [N.J.S.A. 18A:38-25](#) as determined by the Board's Attendance Policy and Regulation pursuant to [N.J.A.C. 6A:16-7.6\(a\)4.iii](#).

The following list counts as excused absences. The first *four* listed are state excused absences, and don't count as a student's day "in membership" (meaning that the absences **do not** count against credit loss in a course/class).

- *Religious observance* ([N.J.A.C. 6A:32-8.3\(h\)](#));
- *A college visit (up to 3 days per school year for students in grades 11 and 12);**
- *Take Your Children to Work Day;*
- *Participation in observance of Veterans Day (N.J.S.A. 18A: 36-13.2) or district board of election membership activities (N.J.S.A. 18A: 36-33)*

- Illness that is supported by notification to the school by the student's physician.
- Required attendance in court
- Out of school suspension from school
- Family illness or death supported by a written letter from the parent upon the student's return to school
- Interviews with a prospective employer or with an admissions officer of an institution of higher education supported by a written letter upon return to school*
- Driver's license test.*
- Necessary and unavoidable medical or dental appointments that cannot be scheduled at a time other than the school day

*Not applicable to Grade 8 Students

Any absence **not listed** above shall be an unexcused absence counted toward truancy.

In the event a student is found to be truant, pursuant to N.J.S.A. 18A:38-25 and [N.J.A.C. 6A:16-7.6\(a\)](#), the Principal or designee shall cooperate with law enforcement and other authorities and agencies, as appropriate, to determine if court referrals are necessary.

8. VACATION LEAVE POLICY

Vacation days will be counted as cumulatively absent toward the 15/7 days allowed in the attendance policy which may put a student in danger of losing **trips, activities and other privileges at the discretion of the administration**. Students going on vacation must complete a student vacation leave form found in the main office (please call or email Mrs. Lynn Masterson in the attendance office (973-770-8854, lmasterson@hopatcongschools.org). The administrative team will check the student's attendance and academic records and will schedule a meeting in the event the vacation would negatively impact the students records.

9. MAKE-UP WORK (DUE TO EXTENDED ABSENCE)

Upon returning from an extended absence, students will have a reasonable amount of time to make up schoolwork (generally one day for each day absent). Extensions on make-up work are permitted **at the discretion of the teacher and administration**.

10. CUTTING

Students are expected to attend all of their assigned classes every day and on time. A cut is defined as a student initiated **unauthorized** absence from an entire class period. In addition to making sure that students are maximizing their instructional time, the administration needs to ensure the safety of the students at all times.

The following consequences will be followed for a cut:

1. 1st Cut – The teacher will refer the student to the Coordinator of Discipline, who will conference with the student, contact the parent and notify the school counselor. The student **will** be assigned a Central Detention (after school from 2:15 - 3:45).
2. 2nd Cut – The teacher will refer the student to the Coordinator of Discipline, who will conference with the student, contact the parent and notify the school counselor. The student **will** be assigned an In-School Suspension.
3. 3rd Cut – The students may lose course credit at the discretion of the principal.

PLEASE NOTE: Students may lose Privileges (as per Regulation [#5600](#)) including, but not limited to participation in trips, activities and other privileges at the discretion of the administration for cutting classes.

11. LATE TO CLASS

Being late to class is defined as not being in your classroom, in your seat, and prepared to work when the late bell rings. A student that arrives late/tardy to class will receive the following consequence(s):

1. 1st offense - Teacher warning (documented)
2. 2nd offense - Teacher phone call/email home
3. 3rd offense - Coordinator of discipline phone call/email home
4. 4th offense - An **absence** will be recorded against the 15/7 Absence Policy
5. The cycle continues accordingly with the possibility of additional loss of privileges as per Regulation [#5600](#)) including, but not limited to participation in trips, activities and other privileges at the discretion of the administration for cutting classes.

Be advised that missing 10 minutes of class or more constitutes a cut (see [Cutting](#)).

12. BATHROOM PASSES/E-HALLPASS

Each student will receive three (3) auto-passes a day, which allows students to minimize disruptions to the teacher's classroom instruction. A teacher generated pass may be created at the discretion of the teacher in the event a student has already used their three (3) passes. (Additionally, students may use the cafeteria bathroom during their assigned lunch period without a pass)

A student is expected to return to class **within 10 minutes**. In the event a student goes over 10 minutes, the following consequences will apply:

1. 1st offense - Teacher warning (documented)
2. 2nd offense - Teacher phone call/email home
3. 3rd offense - Coordinator of discipline phone call/email home AND An **absence** will be recorded against the 15/7 Absence Policy, and a lunch or after school detention will be assigned.
4. The cycle continues accordingly with the possibility of additional consequences including but not loss of privileges as per Regulation [#5600](#)) including, but not limited to loss of EHallpasses, participation in trips, activities and other privileges at the discretion of the administration for cutting classes.

13. DENIAL OF COURSE CREDIT

All students are expected to attend every assigned class on their schedule every day. Students may not exceed 15 days of unexcused absences (see [Truancy](#) for more on excused and unexcused absences) for a full year course, or 7 days of unexcused absences for a semester course. Students exceeding 15/7 days will be considered excessively absent and/or truant and are subject to **removal from the course and/or loss of course credit**.

In the event a student loses course credit:

1. Promotion to ninth grade on time may be affected.
2. Eligibility and participation in extracurriculars may be affected (see [Athletics and Extracurricular Activities](#)).
3. Summer school is not a guaranteed option.

Be advised, that all parents and guardians, regardless of student grade level, are automatically notified of absences (a combined total of excused and unexcused absences) via electronic attendance letters sent out when an absence is recorded in Powerschool at the 3, 5, 7 and 10 class absence intervals. Report cards and online access to attendance/grades in PowerSchool also is a resource for parents to check absences at any time. Please be advised that both excused and unexcused absences will be counted in these totals, regardless of the reason for the absence. If you have any questions concerning your child's absences, please contact Mr. Certo (mcerto@hopatcongschools.org) or your child's school counselor.

14. APPEALS

In the event a student's absences exceeds 15/7 in a class, a student may be placed on "no credit" status. Parents will be notified by a call from the school counselor and/or an email from the administration. The student and their parent/guardian may make an appeal through the high school administration to determine if credit is to be restored. Until a formal decision is made by the administration, any student with absences over 15/7 will be given a "Z" grade and will be denied credit. The appeal process is as follows:

1. Parents submit a written petition of appeal (via email is acceptable) to the high school administration within (5) days of receiving the email from high school administration as stated above.
2. The petition to appeal will be considered by the administration. The high school administration will notify the parents and student as to the date and time of the appeal proceeding (a meeting).
3. The appeal meeting will consist of a meeting between the administrative team, the student and their parents and school counselor to consider the merits of the appeal. All supporting material to be considered as a basis for appeal (attendance records, excuse notes, contract, etc.) must be presented at that time. Data must include documentation, if any, for all days absent, not merely for those in excess of the limit. Students/parents **must** be present at the meeting in order for the high school administrative team to consider restoration of credit. The decision will be communicated to the student at the conclusion of the meeting. The decision may be one of the following:
 - A. Appeal denied
 - B. Appeal granted/credit restored
 - C. Appeal decision deferred pending successful completion of conditions set forth by the administration, which may include but not limited to attendance/academic contract, a schedule change to include a study hall with supervised completion of missed and make-up work, and participation in an after-school credit recovery program (see Credit Recovery Programs).

II. CODE OF CONDUCT (POLICY #5600)

The State of New Jersey mandates the compliance of students with school rules and authority in order to maintain a safe and conducive educational environment ([N.J.S.A 18A:37](#)). As such, the Board of Education adopts this Student Discipline/Code of Conduct Policy to establish standards, policies, and procedures for positive student development and student behavioral expectations on school grounds and, as appropriate, for conduct away from school grounds. Every student enrolled in this district shall observe the following rules and regulations that have been adopted, published and distributed to the community, and for the discipline imposed for infractions of those rules.

Please refer to the “[Code of Conduct Grid Sheets](#)” for more information about infractions and consequences.

1. CLASSROOM/CAFETERIA and HALLWAY BEHAVIOR

Teachers are responsible for maintaining a **safe** classroom and school environment that is conducive to a **productive learning process**. Students who disrupt teachers or students in that endeavor, or whose behavior is deemed dangerous or disrespectful will be referred to the administrative team that will assign consequences for discipline infractions.

Students in the **hallways** should be mindful of the traffic - be courteous, don't block access to areas or paths of travel, and refrain from physical contact. Students that are carrying balls/sporting equipment must hold on to them and NOT bounce them on the floors or walls, and not engage in playing catch or games in order to avoid potential accidents. **Disruptive items will be confiscated.**

Food is NOT permitted in classrooms or hallways. No food is to be taken out of the cafeteria unless kept in book bags for consumption after school hours. Exceptions may be approved by the administrative team for students that have schedule conflicts with a lunch period.

2. DETENTIONS

The following detentions may be assigned depending on the discipline infraction:

1. Lunch Detention - to be served with the Coordinator of Discipline during the student's lunch period. Students are allowed to eat during this time.
2. Central Detention - to be served afterschool on an assigned day (Tuesday, Wednesday or Thursday) from 2:15 - 3:45. A late bus is available to take students home. **Student attendance at an assigned Central Detention is required and takes precedence over all other after school activities and athletics.**

General detention rules that apply for both:

- No cellphone use. Period.
- Students may do homework.
- Students may read.
- Students may engage in any other activity at the discretion of the monitor.
- In the event a student uses their school issued Chromebook (NO personal electronic devices allowed), the monitor and/or administrative team *may check the Chromebook to ensure that it is not being used inappropriately. Please be aware that Google Chats are subject to be checked.*
- A student who is absent on the day they are assigned to attend a detention will be required to attend the detention on the next day they return to school.

Students who cut a Detention or do not comply with the rules will receive ADDITIONAL consequences in addition to serving their originally scheduled detention.

3. SUSPENSIONS (POLICY [#5610](#))

A suspension is defined as a temporary removal of a student from the regular instructional program. The following suspensions may be assigned depending on the discipline infraction:

1. In-School Suspension - A student receiving an in-school suspension will:
 - Report to the office upon arriving at school and will be assigned a monitor that will stay with the student all day.
 - **Students will forfeit their phone to the main office for the day.**
 - Teachers are informed of the student's suspension and will provide work for the student to do during the day.
 - Students may read if done with their work.
 - Students may engage in any other activity at the discretion of the monitor.
 - In the event a student uses their school issued Chromebook (NO personal electronic devices allowed), the monitor and/or administrative team *may check the Chromebook to ensure that it is not being used inappropriately. Please be aware that Google Chats are subject to be checked.*
 - As the student is IN school, the student will NOT receive an absence from school or against classes that count against the 15/7 policy.
2. Out of School Suspension - A student placed in an out of school suspension:
 - Is NOT permitted on school grounds for the duration of the suspension. This means the student will **not be permitted to join in the activities of any team, group, squad, club, activity, etc. that will be functioning that day or night, which includes attending as an audience member/spectator.** If the suspension carries over through a weekend (example - a 3-day suspension beginning on Thursday would return to school on Tuesday) the participation ban extends through the weekend to the remaining days.
 - A suspended student's participation in extracurricular activities over an extended vacation will be at the discretion of the administration.
 - Suspended students and their parents may be required to attend a re-entry conference with the high school administrative team upon their return to school.
 - An out-of-school suspension **does NOT count toward** the 15/7 attendance policy.
 - **A second out of school suspension in the same academic (school) year, regardless of the infraction, or a suspension that results in criminal charges (example - an assault on a school employee) WILL BE PROHIBITED FROM ATTENDING THE PROM, CLASS/FIELD TRIPS or ANY [OTHER PRIVILEGES](#) at the discretion of the high school administration.**

4. PROFANITY

Offensive, abusive or obscene language is not acceptable. Students using profanity or inappropriate/obscene language are subject to the following disciplinary actions:

- 1st offense - Teacher warning (documented)
- 2nd offense - Teacher phone call/email home
- 3rd offense - Central Detention

- If directed toward any high school **staff member** - Out of School Suspension 1 - 5 days, and possible loss of other [student privileges](#).

5. HARASSMENT, INTIMIDATION & BULLYING (POLICY [#5512](#))

A safe and civil environment in school is necessary for students to learn and achieve high academic standards. Harassment, intimidation, or bullying, like other disruptive or violent behaviors, is conduct that disrupts both a student's ability to learn and a school's ability to educate its students in a safe and disciplined environment. As such, the Board of Education prohibits acts of harassment, intimidation, or bullying of students by their peers or school staff members.

As per [N.J.S.A.18A:37-14](#), **Harassment, Intimidation or Bullying** (HIB) means any gesture, any written, verbal or physical act, or any electronic communication, whether it be a single incident or a series of incidents, that is reasonably perceived as being motivated either by any actual or perceived characteristic, such as race, color, religion, ancestry, national origin, gender, sexual orientation, gender identity and expression, or a mental, physical or sensory disability, or by any other distinguishing characteristic, that takes place on school property, at any school-sponsored function, on a school bus, or off school grounds as provided for in section 16 of P.L.2010, c.122 (C.18A:37-15.3), that substantially disrupts or interferes with the orderly operation of the school or the rights of other students and that:

- A. a reasonable person should know, under the circumstances, will have the effect of physically or emotionally harming a student or damaging the student's property, or placing a student in reasonable fear of physical or emotional harm to his person or damage to his property; or
- B. has the effect of insulting or demeaning any student or group of students; or
- C. creates a hostile educational environment for the student by interfering with a student's education or by severely or pervasively causing physical or emotional harm to the student.

Please Note - Schools are **required** to address harassment, intimidation, and bullying occurring **off** school grounds, *when there is a nexus between the harassment, intimidation, and bullying and the school* (e.g., the harassment, intimidation, or bullying substantially disrupts or interferes with the orderly operation of the school or the rights of other students).

Any parent, student or community member may report an incident at any time, by completing an Incident Report Form, found on the District Home Page or by clicking [this link](#).

6. HATE CRIMES AND BIAS-RELATED ACTS (POLICY [#8465](#))

As stated in #5 - Harassment, Intimidation and Bullying, a safe and civil environment in school is necessary for students to learn and achieve high academic standards. Bias crimes and bias-related acts, by their nature, are confrontational, inflame tensions, and promote social hostility and will not be tolerated by the school district.

A "bias crime" is defined as any criminal offense where the person or persons committing the offense acted with a purpose to intimidate an individual or group of individuals because of race; color; religion; gender; disability; sexual orientation; gender identity or expression; national origin; or ethnicity.

A “bias-related act” means an act directed at a person, group of persons, private property, or public property that is motivated in whole or in part by racial; gender; disability; religion; sexual orientation; gender identity or expression; national origin; or ethnic prejudice. A bias-related act need not involve conduct that constitutes a criminal offense.

All bias crimes are also bias-related acts, but not all bias-related acts will constitute a bias crime.

In accordance with [N.J.A.C. 6A:16-6.3\(e\)](#), School employees are required to notify the Principal and the Superintendent or designee if they believe a bias crime or bias-related act has been committed or is about to be committed. The Superintendent or designee shall immediately notify the local police department and the bias investigation officer for the county prosecutor’s office where there is reason to believe that a bias crime or bias-related act that involves an act of violence has been or is about to be physically committed against a student, or there is otherwise reason to believe that a life has been or will be threatened in accordance with [N.J.A.C. 6A:16-6.3\(e\)2](#).

Unless the local police department or the county prosecutor’s office request otherwise, the school district may continue to investigate a suspected bias crime or bias-related act occurring on school grounds and may take such actions as necessary and appropriate to redress and remediate any such acts, which may include, but are not limited to:

- Out of School Suspension
- Referral to Law Enforcement
- Financial Restitution (when graffiti is involved)
- Counseling
- Possible loss of other [student privileges](#).

7. PUBLIC DISPLAYS OF AFFECTION

Displays of affection should occur in private places outside of school. Excessive public displays of affection while in school or at a school sponsored activity are considered to be inappropriate and could result in disciplinary action.

8. WATER COOLERS/FOUNTAINS

Students are to bring in **their own** water *bottles* or *tumblers* from home. Students are permitted to fill them from the hallway water coolers/fountains during the passing time in between classes.

Please be advised that the water cooler in the high school health office is for medical use only. Additionally, students are NOT to ask the nurse for a cup for water. If students do not have their own water bottle or tumbler, water bottles are available for purchase in the cafeteria or purchased from the vending machines located by the gymnasium. **Drinking cups ARE NOT PROVIDED by the nurse or any other staff member.**

9. CARE OF SCHOOL PROPERTY AND VANDALISM (POLICY [#5513](#) and [#7610](#))

Students who cause damage to school property shall be subject to disciplinary measures.

- Parents shall be financially liable for damage caused to school property, facility or grounds.

- Students may be required to perform community service, which may include removing the graffiti from the property, in accordance with the law.
- Vandalism may be reported to the police.
- Possible loss of other [student privileges](#).

A person who purposely defaces or damages district property with any symbol that exposes persons to violence, contempt, or hatred on the basis of race, color, creed, religion, national origin, ancestry, age, marital status, affectional or sexual orientation or sex, social or economic status, or disability **is guilty of a bias crime and shall be reported to appropriate law enforcement authorities.**

Textbooks are *loaned* to students for their use during the school year. Fines for lost or damaged books per the following:

1 year old book:	full purchase cost
2 year old book:	80% full purchase cost
3 year old book:	60% full purchase cost
4 year old book:	40% full purchase cost
5 year old book:	20% full purchase cost

10. INTERNET/COMPUTER ABUSE (POLICY [#2361](#))

Technology is an ever-developing integral part of our lives, and can provide exciting and convenient experiences in education. In order to enhance the learning environment, Hopatcong High School provides computers, internet, network and resources for students and staff for educational purposes only. Students are responsible for acceptable and appropriate behavior and conduct on school district computer networks!

Therefore, the following Computer, Internet, Network and Resources guidelines should be observed for clarity and practice:

- All standards for proper usage apply to **privately and school owned devices** that are given access to services and internet through high school Wi-Fi, and are subject to all policies, procedures and consequences. **Please note that personal computers are not allowed in the school building.**
- Please remember - communications on the computer network/computers are public in nature. Every email, text message, instant message and other internet communication including social media and networking sites connected to the school network can be viewed by school officials at any time!
- The standards for student conduct in accordance with policies [#5500](#) and [#5600](#) apply with electronic communication using school computers, internet, network and resources.
- Access to district computers, internet, network and resources is a privilege and may be revoked at any time.
- School district personnel may monitor networks and internet activity to maintain integrity of the network, ensure proper use, and ensure compliance with Federal and State laws that regulate internet safety. **No one should expect that files stored on district servers will always be private or confidential.**
- The district uses blocking and filtering firewalls that prevent inappropriate material specifically prohibited in the Children’s Internet Protection Act and the Neighborhood Children’s Internet Protection Act.

- Depending on the severity of an inappropriate behavior, students may be subject to severe consequences, including referral to law enforcement.

The following **prohibited** behavior and/or conduct using the school district’s computers, internet, network and resources includes but is not limited to the following:

- Sending or displaying offensive messages or pictures.
- Using obscene language and/or accessing obscene material as defined in sections [1460](#) and [2256](#) of Title 18, United States Code.
- Using or accessing material or visual depictions that are harmful to minors.
- Cyberbullying and inappropriate online behavior, including interactions with other individuals on social networks.
- Posting anonymous or forged messages.
- Invading privacy.
- Damaging district computers, computer systems or networks.
- Disrupting the network.
- Violating copyright laws.
- Using another student, or a school personnel’s password, or using another’s account without consent.
- Engaging in other activities that do not advance the educational purposes for which the computers, internet, network and resources were provided.
- Using the school district’s computers, internet, network and resources without completing the consent form signed by the student and their parents or guardians.
- Other behaviors deemed inappropriate by the high school administrative team where technology is used in any manner that substantially disrupts the school environment, from within or from outside the classroom, **or that violates the rights of others**.

Inappropriate use of technology at Hopatcong High School may result in:

- Central (after school) Detention.
- In or Out of School Suspension.
- Suspension or revocation of network and/or computer privileges.
- Possible loss of other [student privileges](#).

11. SCHOOL BUS REGULATIONS

Disruptive students on a school bus create a safety hazard, not only for the driver, but for all students under the care and supervision of the driver. Students are expected to be compliant with the directives of the bus driver, and observe the following rules **anytime** traveling by school transportation:

- Be on time at the designated school bus stops.
- Remain out of the roadway while waiting for the bus.
- Wait until the bus comes to a complete stop before attempting to enter or exit the vehicle.
- Remain seated while the bus is in motion.
- No part of the body should ever be extended outside the bus.
- Aisles must be kept clear at all times.
- Conversations should take place in normal tones of voice. A sudden scream or yell is especially dangerous and disruptive.

- No throwing anything from the bus (may result in criminal charges).
- Smoking/Vaping on the school bus, and bus stop **is strictly forbidden**. Consequences apply!
- Crowding, pushing, shoving, dangerous and unsafe behavior (“horseplay”) **is strictly forbidden**.
- Students are expected to ride their assigned bus to and from school and all after school activities.

Be advised - Bus stops and other designated areas are extensions of the school. Bus misconduct may result in:

- Central Detention (after school).
- In or Out of School Suspension.
- Loss of transportation. Parents will be responsible for providing transportation to and from school should their child be suspended from the bus.
- Possible loss of other [student privileges](#).

12. ELECTRONIC DEVICES/PHONES/EAR BUDS (POLICY [#5516](#))

It is understood that electronic devices are commonplace in most people’s lives. Students who use electronic devices for *non-instructional* purposes during instructional time are not fully engaged in the learning experience and can be disruptive to the learning process. Electronic devices, whether personal or school issued, can be dangerous when not used responsibly. The Hopatcong school district takes violations to the academic integrity policy, harassing or bullying staff and students, and unauthorized photography or video recording as serious and potentially criminal matters.

As such, in accordance with [POLICY 5516](#):

- Teachers and staff members **will regulate electronic devices (including earbuds) in their classrooms and educational areas** to create and maintain an environment conducive to learning and free of distractions. Teachers will direct students to put phones away during instructional time, into bookbags, central storage areas, or otherwise (on desk, face down, etc).
- Cell phones and all cell phone functions (cameras, applications, and social media) are prohibited in all classrooms, **restrooms, hallways during instructional periods**, gyms, auditoriums, main and guidance offices *unless expressly permitted by a staff member and especially for educational or emergency purposes!*
- Personal computers are not allowed in school.
- **Earbuds are NOT allowed in student’s ears, in classrooms during instructional periods.**

Therefore, the following cell phone usage guidelines will be observed for clarity and practice in the High School:

The appropriate and non-disruptive use of cell phones and earbuds is permitted before and after school, during passing in-between classes, and in the cafeteria during a lunch period. At the beginning of all classes (including study hall), athletics and extracurricular activities, cell phones and earbuds need to be put away and out of sight (silenced and without vibration) unless expressly permitted by a staff member.

Student use of cell phones is a privilege *not a right*. Non-compliance or abuse of this privilege **will** result in the following consequences:

- First time - the student will be directed to the administrative team in the main office to surrender the

device during school hours for one (1) to two (2) school days

- Second time - the device will be surrendered for a week during school hours and parental notification
- Third time - the device will be surrendered for an indefinite amount of time at the discretion of the Principal and parental notification
- Potential loss of assignment credit

PLEASE BE ADVISED - ANY student that has been found using their cell phone or other electronics (including a school issued Chromebook) in any manner that substantially disrupts the school environment, from within or from outside the school environment, **and/or that violates the rights of others, or interferes with a school consequence issued to another student, WILL** be subject to more severe consequences. These consequences **include** but are not limited to:

- An **immediate mandatory restriction** of the student's use of the phone and other electronic devices school property for one full school year
- Contacting the local law agencies to determine if a crime has been committed.

Refusal to adhere to these consequences will result in a student being issued an Insubordination Consequence, and the student will immediately be suspended from school until a meeting with the Superintendent, Principal and other possible members of the administrative team is completed.

As per board policy, all parents and students are REQUIRED to sign an acknowledgment that verifies that they understand the policy and consequences as stated.

Simply abiding by the practice of not using the device in class (including hallways and bathrooms) will greatly reduce the need for administrative action according to the school policies and state codes, and as listed!

13. FIGHTING/PHYSICAL ASSAULT/ALTERCATIONS

The Hopatcong School District considers physical altercations serious dangerous matters. As such:

- Any student **involved** in a physical altercation that includes but is not limited to hitting, punching, slapping, poking, grabbing, pulling, tripping, kicking, and pinching, will result in an Out of School Suspension (OSS) for a 3 to 9 days. Police are notified in all physical altercations.
- Any student who commits an assault, as defined under [N.J.S.A. 2C:12-1\(a\)1](#), not involving the use of a weapon or firearm, upon a teacher, administrator, other school district employee, or Board member acting in the performance of his or her duties and in a situation where his or her authority to act is apparent, or as a result of the victim's relationship to the school district, shall be suspended 9 days. Police will be notified, and criminal charges are likely to be filed.
- **Recording** any physical fight is strictly prohibited. If a student is caught recording a fight, the following disciplinary procedures will be followed:
 - The student's phone will be confiscated for a time to be determined by the administrative team and returned to the PARENT.
 - The video will be deleted from the recording device.
 - The student responsible for recording or disturbing the recording (which includes posting the fight to social media) will be suspended for 1 to 4 days.

- In addition, anyone who is caught forwarding the video to other students/persons will be suspended for an additional 3 days.

14. CHEATING/PLAGIARISM:

Cheating and plagiarism are severe violations of school policy that undermine learning, obstruct proficiency, and demoralize ethical behavior. This conduct prohibits both teachers and students from ascertaining one's true academic ability; furthermore, it breaches the trust that is vital toward a school community. Examples of infractions that breach academic integrity include

- Plagiarism of any assignment that is literature or research based. **This includes the inappropriate use of AI and ChatGPT.**
- Electronic copying/digital file sharing of any and all academic content (unless instructed by teacher).
- Screenshotting and scanning academic (classroom) material and assessments.
- Social Media posts that share assigned subject material.
- Online communication via Bluetooth correspondence, chat rooms or video meets during assessments.
- Storing of information in graphing calculators, cell phones, and other electronic devices.

If a student is found to have conducted an **offense against** academic integrity, **including the inappropriate use of AI and ChatGPT**, the following consequences *will* result but are not limited to:

- Loss of assignment credit/reduction of grade
- Discussion with the student and parents/guardians
- Prevention of admittance into the National Honor Society
- Loss of recognition to receive an honorary status upon graduation (i.e. Valedictorian, Salutatorian)
- Possible loss of other [student privileges](#).
- Loss of any other privilege the Building Principal or designee determines may be appropriate and consistent with Policy and Regulation [# 5600](#)

15. STUDENT ID CARDS

Every student is issued a student picture I.D. card. Students are required to carry their student I.D. card while on campus and present it when requested to do so, which will be:

- In hallways at the request of hallway monitors.
- In the event a student is signing into school late at the office.
- In the cafeteria for obtaining meals and snacks.
- After school events, including all athletic competitions.

Failure to present an ID Card, or falsely identifying oneself will result in a referral to the Coordinator of Discipline and may result in consequences.

16. SLEEPING IN CLASS

Studies clearly show that children and adolescents who do not get enough sleep have a higher risk of physical and emotional issues, including short attention spans and difficulties in regulating their behavior. The CDC (Centers for Disease Control and Prevention) recommend that students aged 6 - 12 should be getting 9 - 12 hours of sleep a day, and students aged 13 - 18 should be getting 8 - 10 hours of sleep per day. For more on the importance of student sleep, please see the [CDC Website accessed at this link](#).

An alarming recent social trend is students who use social media or play video games late into the evening, resulting in lack of sleep and disturbed sleep patterns. Students arriving to school for early classes therefore may tend to be drowsy, and drift off, especially as their brains are coming off of dopamine rushes spurred by electronic use.

Please be advised - teachers have been directed to send students that have been sleeping in class to the nurse, or call the administrative team or school counselor who will escort the sleeping student to the nurse. In the event a **second** referral is made for students that cannot stay awake in class, parents will be notified, and consequences may occur, including, but not limited to loss of assignment credit or an after school detention.

17. E-HALLPASS

Each student will receive three (3) auto-passes a day, which allows students to minimize disruptions to the teacher's classroom instruction. A teacher generated pass may be created at the discretion of the teacher in the event a student has already used their three (3) passes. (Additionally, students may use the cafeteria bathroom during their assigned lunch period without a pass)

A student is expected to return to class **within 10 minutes**. In the event a student goes over 10 minutes, the following consequences apply:

- 1st offense - Teacher warning (documented)
- 2nd offense - Teacher phone call/email home
- 3rd offense - Coordinator of discipline phone call/email home AND An **absence** will be recorded against the 15/7 Absence Policy, and a lunch or after school detention will be assigned.
- The cycle continues accordingly

18. LOSS OF PRIVILEGES

Students who:

- are continually referred to the administrative team,
 - exhibit chronic disruption and/or disrespect,
 - have received more than one suspension,
 - are chronically absent from or tardy to school,
 - are experiencing health concerns related to substance abuse,
- will not be eligible for privileges. These include but are not limited to:
- moving freely about the school building (loss of passes, or the assigning of a chaperone),
 - participation in extracurricular activities, including:
 - clubs and activities sponsored by the Board of Education
 - non-academic class trips **including the 8th Grade Trip**
 - any other privilege the Building Principal or designee determines may be appropriate and consistent with [Policy](#) and [Regulation](#) 5600 and [N.J.A.C. 6A:16-7.1](#).

Privileges and Suspensions:

- Any student who is suspended out of school (OSS) may not participate in sport/activities during the suspension period.

- Multiple suspensions may require a student, along with his/her parent/guardian, to appear before an administrative review committee. At this meeting, exclusion from all athletic, extracurricular and social activities, and school trips for the remainder of the school year will be considered.
- **A second out of school suspension in the same academic (school) year, regardless of the infraction, or a suspension that results in criminal charges (example - an assault on a school employee) WILL BE PROHIBITED FROM ATTENDING THE CLASS/FIELD TRIPS or ANY OTHER PRIVILEGES at the discretion of the high school administration.**

19. WEAPONS (POLICY [#8467](#))

Any pupil who possesses, uses, or exchanges a weapon in violation of this policy shall be subject to stringent discipline, which may include expulsion (as per the [NJ Zero Tolerance for Guns Act, N.J.A.C. 6A:16 - 5.5](#)). Additionally,

- Any pupil or school employee who suspects or knows of the presence of a weapon in violation of this policy and fails to report the same shall be subject to discipline.
- Any person who possesses a weapon on school premises or school transportation or at a school-sponsored function shall be reported to the appropriate law enforcement agency.
- For the purpose of this policy, "weapon" means anything readily capable of lethal use or of inflicting serious bodily injury. This includes, but is not limited to:
 - All firearms
 - Knives
 - Dangerous instruments intended to inflict harm
 - Components that can be readily assembled into a weapon
 - Explosive devices
 - **Imitation firearms**
 - And others enumerated in [N.J.S.A. 2C:39-1f](#) (which includes air, compressed air, and other “toy” guns that shoot projectiles)

20. THEFT

Students are prohibited from stealing, or attempting to steal, school or private property and from knowingly being in possession of stolen property. In the event a student is found to be involved in theft, students will:

- Be suspended from school for 3 to 5 days
- Be responsible for financial restitution
- Be referred to the police

Please be advised - the **high school cafeteria services** are provided by an outside vendor/company. Stealing/shoplifting items from the cafeteria, including snacks and drinks is not only punishable by Hopatcong High School, but students may be additionally charged with legal action.

21. BUILDING SECURITY/DOORS (Policy [#7440](#))

Students who prop open doors, or open doors to allow any person access to the building for any reason, are in violation of the measures put into place by the Board of Education to ensure security and safety. Students found violating these measures are subject to the following disciplinary actions:

- 1st offense - Warning (documented)

- 2nd offense - Central Detention
- 3rd offense - In School Suspension and possible [loss of privileges](#)

III. GENERAL INFORMATION

1. STUDY HALL

Students that are enrolled in a study hall are provided the time and means necessary for academic support. The administrative team will have a low tolerance for study hall students that are failing classes when considering [privileges](#); meaning, that students with a Study Hall in their schedule are expected to have their academic work completed and submitted on time, and that this will be considered by the administrative and guidance teams if students seek participation in prom, trips and other [privileges](#), or enrollment in an academic recovery program.

If a student has a study hall on their schedule, they are expected to report to the proper location and on time and observe the following:

1. All rules governing [classroom behavior](#) apply to all study hall periods.
2. Policies that affect [cutting](#) and [late to class](#) apply for all study halls.
3. Policies concerning [phones and electronic devices](#) are observed during study halls.
4. In the event an appointment pass has been issued for a legitimate reason (nurse, guidance, music lesson, athletic trainer, etc) students MUST report to the study hall teacher prior to attending the appointment.
5. Time spent in study hall will be spent completing schoolwork, studying or reading. Students are required to report with their work or reading materials at the beginning of the period.
6. Students are NOT allowed to eat food from the cafeteria or lunches/snacks brought from outside the school (unless approved by the administration due to schedule conflict or otherwise).
7. Playing games accessed via electronic devices is not advised. This assumes that all of your schoolwork is complete and is quality work.

2. PHYSICAL EDUCATION (P.E.) CLASS AND THE GYM

As per [18A:35-7](#), “every pupil, except kindergarten pupils, attending the public schools, insofar as [they are] physically fit and capable of doing so, as determined by the medical inspector, shall take such courses, which shall be a part of the curriculum prescribed for the several grades, and the conduct and attainment of the pupils shall be marked as in other courses or subjects, and the standing of the pupil in connection therewith shall form a part of the requirements for promotion or graduation.”. Simply put, this means that students are required to participate in P.E. classes in order to graduate from high school.

As such the following protocols and procedures should not only be considered by every student, but will be followed by all students in order to pass P.E. classes:

- Students must participate in the activities. There are choices suitable for all students. *Sitting on the sidelines or bleachers doing nothing or using an electronic device will not be allowed.*
- The only “dress code” for P.E. classes is that all students must wear [sneakers](#) for activities. Other footwear, including slides, sandals, flip flops or *anything* other than sneakers is not permitted for P.E. class.
- The gym is an active classroom. Therefore, only the students in the gym are students scheduled for that gym period. Students in the gym that are not scheduled for P.E. will be referred to the Coordinator of Discipline for a “Being in an Unauthorized Area” [Code of Conduct](#) violation.

3. LATE BUSES

Late buses will run on Tuesdays, Wednesdays and Thursdays **only**. The bus will be available for pick up following after school activities, detentions, extra help (etc.) at 3:45pm. **Please be advised** that there are limited buses on any given day, and although the driver will attempt to drop students off close to their normal stop, drop off points may vary and require additional walking. ALL [bus regulations](#) apply to late buses.

4. BUILDING SECURITY/ELECTRONIC SURVEILLANCE/CAMERAS (POLICY [#7440](#) and [#7441](#))

In accordance with [N.J.S.A. 18A:7G-5.2.b.\(15\)](#), propping open doors to buildings on school grounds is strictly prohibited and students and staff shall not open a door for any individual. All persons seeking entry into the building shall be directed to the main entrance. Students who violate this policy and state law will be referred to the administration.

The Board of Education authorizes the use of electronic surveillance monitoring devices in school buildings and on school grounds. Therefore, all school buildings and school grounds within this school district may be monitored using such devices in accordance with Board Policy.

The content produced by the surveillance system under certain circumstances may be considered a student record, in which it will be subject to the Board of Education policy and regulations regarding confidential student records. If the content of the surveillance system becomes the subject of a disciplinary proceeding, it shall be treated like other evidence in the proceeding, and the district declares such use to be a legitimate educational interest.

5. STUDENT PARKING/DRIVING PRIVILEGES (POLICY [#5514](#))

(Not applicable for Grade 8 students)

6. LOCKERS (HALLWAY AND PHYSICAL EDUCATION)

Each student will be assigned a locker at the beginning of the school year. *The student is responsible for the locker's order and contents.* If a problem arises with the operation of a locker, the student should report it to the office. Please be advised:

- A student's locker is considered to be the property of the school. A locker is subject to inspection/search upon the authorization of the administration.
- Fines will be assessed for willfully damaging lockers.
- Students are advised against bringing large sums of money or other valuable belongings to school. The school will not be responsible for lost or stolen items/money at any time.
- It is strongly suggested that students provide their own combination lock for their assigned GYM locker as the school is NOT responsible for lost or stolen items at any time.
- Student's personal lock may be cut off by the administration for safety and/or security reasons at any time.
- A student's assigned locker is only for their own use and may not be shared at any time with another student.
- Lockers are to remain closed and locked at all times.

7. STUDENT SEARCH AND RIGHT TO PRIVACY (POLICY [#5770](#))

The Board of Education recognizes that a pupil's right of privacy may not be violated by unreasonable search and seizure and directs that no pupil be searched without reason or in an unreasonable manner. *However*, please know that the law allows the more lenient standard of reasonable suspicion, over the law authority's ordinary standard of probable cause. (See [T.L.O., 469 U.S. 325 \(1985\)](#))

The high school administration is charged with the responsibility of maintaining order and discipline in the schools and of safeguarding the safety and well-being of the pupils in their care. In the discharge of that responsibility, the principal may search or request the search of the person or property (book bags etc) of a pupil as authorized by this policy, *with or without the pupil's consent*, whenever the principal has reasonable grounds to suspect that the search is required to discover evidence of a violation of law or of school rules, *including but not limited to the use of substances*.

Additionally, all school issued lockers, desks or any issued storage area is subject to search by school officials at any time.

8. PROM 8th Graders are NOT permitted to attend Prom.

9. FOOD AND BEVERAGES IN HALLWAY

- Students are not permitted to bring food from the cafeteria, into halls or into other rooms in the school *unless given specific verifiable permission from the high school administrative team*. Possible permissions would be possible if a student is involved in an event that keeps the student from eating during their assigned lunch period, an assigned lunch detention, or other situations at the discretion of the administrative team.
- Other food from outside the school may not be consumed openly in hallways or classrooms, using the same guidelines as above.
- Water bottles are allowed, but ALL OTHER BEVERAGES (coffee drinks, juice, soda et al.) must be consumed from a **covered tumbler or mug**.
- Food ordered from outside vendors **will NOT be accepted** at the office, or any other area of the school.
- Food and beverages brought into the school must be stored in bags upon arrival and may only be consumed with the conditions above.
-

10. MEDICATION (POLICY [#5330](#))

If a student needs medication, consultation with the student's physician should be made about taking the medication before and/or after school hours as no child will be allowed to take **any** medication in school without administrative approval. The following procedure must be observed:

- A. A request in writing by the parent or guardian of the student that the school nurse administer the medication.
- B. The parent or guardian will have the prescribing doctor complete the required HBS Medication Administration documentation and then submit the documentation back to the school nurse. The parent or guardian will provide the prescribed medication in the original pharmacy container to the school nurse.
- C. The medication must be kept in the Health Office in the original pharmacy container.

11. HEALTH SERVICES/SCHOOL NURSE

The Health Office is staffed by a school nurse and is available to pupils for illness, injuries or emergencies at all times. Please be advised:

- No student will be admitted to the health office **without a pass** (unless in an emergency).
- A student cannot see the nurse during passing time (in between classes). If a student feels the need to see the nurse between classes, the student must first report to the next period teacher and obtain a pass (unless in an emergency).
- Under no circumstances should any student who is feeling ill leave the campus without permission from the nurse.
- Emergency contact information is to be filled out by each parent or guardian. The information be kept on file in the main office and nurse's office in order that the parent or other designated person can be notified if necessary. This information should be kept up to date.

12. DRESS CODE REGULATION (POLICY [#5511](#))

Hopatcong High School recognizes that each student's mode of dress and grooming is according to an individual's means, style and preferences. However, Hopatcong District Policy [5511](#) does retain the right to intercede if students are dressed or groomed in a way that adversely affects the safety of all of the students, or of the educational program of the school.

The following dress code usage guidelines should be observed for clarity and practice:

Allowable Dress & Grooming

- Clothing must include both a shirt with pants or skirt (or dress or the equivalent) and shoes.
- Shirts and dresses must have fabric in the front and on the sides.
- Clothing must cover undergarments (waistbands and bra straps excluded)
- All fabric must cover all private parts and must not be see through.
- Hats, hoodies and headwear must allow the face and ears to be visible to staff and not interfere with the line of sight to any student or staff (in adherence to the electronic devices and building security policies). Masks worn for health reasons supersede face visibility.
- Clothing must be suitable for all classroom activities and where there may be safety concerns. *This means that Physical Education, Science, and CTE Programs may have additional requirements to avoid hazards!*

Non-Allowable Dress & Grooming

- Garments designed to be worn as undergarments may not be worn as outerwear. This INCLUDES a sleeveless undershirt/tank tops. These garments, and/or muscle shirts must be worn with an undershirt.
- Tops that do not sufficiently cover a student's midsection above the belly button, should be school appropriate and are subject to approval at the discretion of the principal.
- Clothing may not depict, advertise or advocate the use of alcohol, tobacco, or other controlled substances.
- Clothing containing profanity or sexual references or innuendoes.

- Clothing may not use or depict hate speech targeting any groups based on race, ethnicity, gender, sexual orientation, religion or otherwise.
- Clothing, apparel and/or accessories which indicate affiliation with any gang or criminal activity.
- Attire or grooming that threatens the health or safety of any other person.
- *Other items may be deemed inappropriate by Mrs. Martinez or Mr. Certo as necessary.*

A commonsense approach and an ongoing respect for the entire study body at Hopatcong High School should minimize consequences pertaining to dress code concerns, and allow us to participate in a safe and conducive learning environment.

Teaching staff members shall report violations of the dress code to the Building Principal or designee, who will interpret and apply the code and intervention procedures. Every attempt will be made to have a student that violates the dress code to change into appropriate attire. See the [Code of Conduct Grid](#) for possible consequences if necessary.

13. LIBRARY MEDIA CENTER SERVICES/TECHNOLOGY CENTER

The Library Media Center may be used for reference assignments and recreational reading. It is essential that students respect the rights of classmates in maintaining a quiet atmosphere in the Library.

The HHS Library is our school's center for Research, Information Literacy, Digital Literacy, and Reading. Our print collections include over 12,000 fiction, nonfiction, and reference titles for research or recreational reading. Digital resources are linked through our [Library website](#) and include access to millions of scholarly and academic research and reference articles through over [30 subscription EBSCO databases](#). Other digital resources include our Library website which links additional resources, social media updates, and curated Research Guides for specific classes/topics compiled by our district's state certified Library Media Specialist. Students are provided access to Reference, Information Literacy, Digital Literacy, and Reading support by our Library Media Specialist through class visits, small groups, or individually. Students may visit the Library during Open Library Hours for support, research, use of the Library space, or to browse/checkout Library materials. Open Library Hours may vary - please check updated posted times. Students visiting the Library are required to follow all behavior expectations as noted in posted signage. Self Checkout is also available in the Library. Please contact Ms. DeRose, Library Media Specialist, (ederose@hopatcongschools.org) for further information regarding Library services.

Students interested in using the Library Media Center must understand that the Library is a learning environment and are *expected* to use the Library in an appropriate manner at all times. All school rules and regulations apply in the Library, including cell phone usage. The privilege of using the Library may be revoked at any time.

14. CHROMEBOOK INITIATIVE (REGULATION [#2361](#))

All High School students will be given the opportunity to take part in our High School's "1:1" Chromebook Initiative. All parents, guardians, and students will be required to consent to the provisions of the Chromebook Initiative Contract. Regulations for [#2361](#) will be followed. Please see the Chromebook initiative agreement.

15. VISITORS/GUESTS

All parents/visitors must enter via the Main Entrance and sign in at the Main Office lobby. Students may not bring visitors to school.

16. CAFETERIA SERVICES

The school cafeteria is maintained by an outside vendor as a vital part of the health program of the school. To encourage good nutrition, well-balanced meals are offered at reasonable prices. Parents, please log on to PowerSchool to view lunch account information and add funds to student accounts. School personnel do not have access to that information.

17. FIRE DRILLS/SECURITY DRILLS

Fire drills/security drills are required by law for the safety of students and faculty.

Fire Drills:

- A. Announcements from the main office will precede any fire drill.
- B. At the fire signal (continuous sound), any and all talking will cease.
- C. Specific exit instructions are found in each classroom next to the exit door. Familiarize yourselves with these instructions.
- D. Each class will exit the building per the instructions and move rapidly, silently, and alert to emergency instructions.
- E. Evacuate the building to a point 200 feet beyond the exit.
- F. At the all clear signal, return to the building.

Security Drills:

- A. Follow directions given by staff.

18. PROCEDURES FOR COMPLETION OF WORKING PAPERS

Every student obtaining employment who has not reached the age of 18 is required to have working papers. As of June 1, 2023, Working Papers for minors have gone digital. Minor workers, their caregivers, and employers all fill out their respective parts of the streamlined online application instead of using the old paper form. Please get New Jersey Working Papers Online at [MYWORKINGPAPERS.NJ.GOV](https://myworkingpapers.nj.gov).

IV. SUBSTANCE ABUSE/SMOKING

1. STUDENTS SUSPECTED UNDER THE INFLUENCE OF SUBSTANCES (POLICY #5530)

The Board of Education recognizes that a student's abuse of harmful substances (this includes vaping) seriously impedes that student's education and threatens the welfare of the entire school community. The Board is committed to the prevention of substance abuse and the rehabilitation of substance abusers by educational means but will take the necessary and appropriate steps to protect the school community from harm and from exposure to harmful substances.

If a student is suspected of using or being under the influence of a substance (student is observed in the use of a substance **or** exhibits physical and/or behavioral characteristics that indicate the immediate use of a substance), or if a student exhibits an odor of alcohol, tobacco or scented vapes :

- The student's parent and the Superintendent or designee will be notified.
- The student, their possessions and locker will be searched by the Principal for potential possession of controlled substances.
- The student must go for an immediate medical examination for the purposes of providing appropriate health care and for determining whether the student is under the influence of alcohol or other drugs, other than anabolic steroids.
- Be advised - Any substance screening conducted by the school nurse and/or other staff is not a substitute for the required medical examination required in [N.J.S.A. 18A:40A-12](#).

Any violation of Board rules prohibiting the use, possession, and/or distribution of a substance is a serious offense, and the student who violates a substance abuse rule will be disciplined accordingly (as per Regulation [#5530](#)). Repeated violations are more severe offenses and warrant stricter disciplinary measures. Students who violate the substance abuse rules will be disciplined as follows:

- First offense: Parent and Police are notified, 4-9 days Out-of-School Suspension (OSS), parent/guardian must meet with the Student Assistance Coordinator (SAC), School Counselor or designee within 48 hours and follow treatment recommendation.
- Second offense: Parent and Police are notified, 7-9 days Out-of-School Suspension, parent/guardian must meet with Student Assistance Coordinator (SAC), School Counselor or designee within 48 hours and follow treatment recommendation.
- Third offense: Parent and Police are notified, immediate 9 day Out-of-School Suspension with home instruction. To return to school, the pupil has to follow the treatment recommendation.

In accordance with [N.J.A.C. 6A:16-4.1\(c\)](#), the following disciplinary action will be taken in the event the student does not follow through on the recommendations of an evaluation for alcohol or other drug abuse and related behaviors:

- First offense: Failure to follow treatment recommendation (see Regulation [#5530](#) (Letter c for information) will result in 9 days Out-of-School Suspension and the Division of Youth and Family Services may be notified.
- Second offense: Failure to follow treatment recommendation will result in potential expulsion proceedings or homebound instruction.
- Third offense: Suspended 9 days with home instruction.

2. RANDOM DRUG TESTING (POLICY [#5536](#))

(Not applicable to Grade 8 Students)

3. SMOKING/VAPING (POLICY [#5533](#))

In accordance with [N.J.S.A. 26:3D-58](#) and [N.J.A.C. 8:6-7.2](#), Board of Education policy and state law prohibits smoking and the use of all tobacco products:

- on school grounds, indoors or outdoors.
- at events sponsored by the Board away from school.

- any transportation vehicle supplied by the Board.

This includes the use of:

- cigarettes.
- cigars.
- vaping devices.
- electronic devices of any kind.
- chewing tobacco.
- snuff.
- and ANY smoking or smokeless tobacco use of ANY KIND.

If a student is suspected/caught using and/or have on their persons, a tobacco product/device:

- Student may be searched if warranted (see [student search](#))
- The student's parent/guardian and the Superintendent or designee will be notified.
- The student **must** go for an **immediate** medical examination for the purposes of providing appropriate health care and for determining whether the student is under the influence of illegal substances.
- A Medical Evaluation and Chemical Screening Report must be returned to the Student Assistance Coordinator within 24 hours of the initial referral. A student that does NOT receive an examination within 24 hours will be treated as an automatic "positive" result for substance use.
- A student IS ALLOWED back to school the following school day, provided a copy of the Medical Evaluation and Chemical Screening Report is returned, as the results will be pending.
- In the event a medical screening assessment shows that a student is found to be under the influence of a substance, then the consequences are as stated in Regulation #[5530](#) (Drug/Alcohol) and listed above.
- Any substance screening conducted by the school nurse and/or other staff is not a substitute for the required medical examination required in N.J.S.A. 18A:40A-12.

In the event a person is found to have violated this Policy and the law, the Principal or designee may file a complaint with the appropriate Municipal Court or other agency with jurisdiction as defined in [N.J.A.C. 8:6-9.1\(c\)](#).

V. ACADEMICS, COUNSELING AND GUIDANCE SERVICES

The purpose of the Guidance Department is to offer assistance with academic and social issues students may face in school. Students are encouraged to go to their school counselor for assistance whenever they feel necessary. Information on occupations, the armed services, college, and summer jobs is also available in the Guidance Department.

<u>COUNSELOR</u>		<u>PHONE</u>
Wendi Braun	School Counselor	973-770-8862
Michelle Iannuzzi	School Counselor and Student Assistance Coordinator	973-770-8864
Melissa Stein	School Counselor	973-770-8863
James Valentine	School Counselor	973-770-8865

In addition, the following staff is available to assist students and parents:

Amanda Michko	School Social Worker	973-770-8825
Susan Pallotta	School Social Worker	973-770-8858

1. HOME INSTRUCTION (POLICY#2412)

When a student has a temporary or chronic health condition, a parent/guardian may provide a request from a physician/medical doctor requesting home instruction. This can be done when a student will be absent for more than 10 consecutive school days or 20 cumulative school days during the school year. In order to receive this instruction, a telephone call must be made to the Guidance Office requesting the service. The physician's/medical doctor's note must include the need for home instruction along with the anticipated length the service will be needed. Final approval for home instruction will be made after the district's physician reviews the medical note. Home instruction services may be provided virtually and/or in-person. A parent/guardian or another responsible adult must be at home during the home instruction sessions. Teachers assigned to home instruction will call the home directly to make visitation arrangements.

2. HOMEWORK REQUESTS

To obtain homework, students and parents should utilize the school website www.hopatcongschools.org, click on "Staff", then click on the teacher's name to access their individual websites and homework postings.

3. GUIDANCE APPOINTMENTS

Students must follow the procedures listed below to request an appointment with their School Counselor:

- A. Students may make appointments to see their school counselor by going to the Guidance Office before/during homeroom, during lunch or study hall (with an E-Hallpass), or after dismissal.
- B. Students who need to see their school counselor during an academic or elective class, may ask their teacher to go to the Guidance Office. With teacher permission, students will then make an E-Hallpass to the Guidance Office.
- C. At the conclusion of the appointment, the school counselor will return the E-Hallpass to notify the teacher that the student is returning to class.
- D. School counselors have office hours, after school, once a week, from 2:10-2:40. The day and times are listed outside of the Guidance Office. Students may set up an appointment with their school counselor to see them during their office hours.

E. Students may also email their school counselor to set up an appointment with them for a later date.

All appointments during the school day will be scheduled through E-Hallpass.

The above procedure will not apply in cases of emergency. Emergencies will include, but not be limited to:

- A. Serious personal problems
- B. Immediate teacher referrals
- C. Referrals by administration

When college representatives plan to make scheduled visits, notification of these visits will be made to students the previous week. If a student wishes to attend a college representative's presentation, he/she must follow the procedure as described in number one (1) above.

4. CHANGE OF ADDRESS AND TELEPHONE NUMBER

Any student who changes his/her home address and/or telephone number must report this change to Mrs. Stacy Yanko, Guidance Secretary (syanko@hopatcongschools.org). This change is subject to confirmation. Proof of change of address is required.

5. DROP/ADD POLICY

If any course is to be dropped, it must be done within the time limit established by the school. The following conditions must be satisfied before approval for a course to be dropped will be granted. The course must be replaced by a suitable alternative during the same period.

- A. Careful review by the counselor to ensure that a change is both necessary and justified.
- B. A course may only be dropped/added during the first two (2) weeks of the course for full year and semester courses and during the first (1) week for marking period courses, except for level changes.
- C. Students opting to withdraw past the drop/add deadline would have to do so before the end of the 3rd marking period for full year classes, or by mid marking period of 2nd half for semester courses.

6. LEVEL CHANGES

It is sometimes necessary to change the level of a course in which a student is enrolled. This change should be made only after careful consideration.

- A. Level changes can be made up until the end of MARKING PERIOD 1. After MARKING PERIOD 1, there should be NO level changes.
- B. Under certain circumstances, a student may have to drop a level after Marking Period 1.
- C. A change in level should only be made after contact with the counselor, parent/guardian, student, teacher, and administrator.
- D. A change in level should only be made after contact with the school counselor, parent/guardian, student, teacher and administrator.
- E. Level changes will be reviewed/approved by the Administration.

7. RECORD KEEPING/PROMOTION

- A. If a course is dropped before the close of the first marking period, no record will be kept.
- B. If a course is dropped after the close of the first marking period, the student's report card will reflect a WP (Withdrawn Passing) or WF (Withdrawn Failing) for that particular course depending on the academic standing of the student upon removal from the course. No partial credit will be given for a WP.

C. Promotion will occur unless the student fails two (2) or more academic classes. If the student fails two (2) or more academic classes, the parent/guardian and the guidance team will determine which one of the following options will allow the student to meet the necessary requirement to be promoted to high school:

- a. Summer School at the expense of parent/guardian (Only with Administrator approval)
- b. Repeat grade level the following school year.

8. COLLEGE COURSES/ONLINE COURSES (NOT APPLICABLE FOR GRADE 8)

9. EXTRA ACADEMIC ASSISTANCE

Students may require extra academic help beyond the school day. All students are encouraged to make “extra-help” appointments with their teachers. [National Honor Society](#) Members are also available for peer tutoring assistance.

10. COMPUTING GRADES

Teachers will maintain numerical grades for work received during the marking period. Grades will be recorded numerically 0-100 with 65 as the passing grade. Report cards will reflect the alpha grade only.

For the purpose of determining a student’s report card grade, the following scale shall be used:

NUMERICAL EQUIVALENT GRADES 6-12	GRADE
98-100	A+
94-97	A
90-93	A-
87-89	B+
83-86	B
80-82	B-
77-79	C+
73-76	C
70-72	C-
68-69	D+
66-67	D
65	D-
0-64	F

*Although the chart below illustrates rounded scores to 1/10th, the actual computation formula uses an unrounded true score.

The numeric range of the alpha grade (F) will be worth a minimum of 50 to a maximum of 59 for eighth graders for the first marking period ONLY. For the second, third, and fourth marking periods, eighth graders will receive the actual numeric grade they earn.

The final mark for the year is obtained by averaging the numerical grades of all the marking periods, midterm and final exam, according to the following percentages:

Term Weights	M1	M2	M3	M4	E1	E2	Y1
Full Year Courses	20%	20%	20%	20%	10%	10%	100%
Semester 1 Courses	45%	45%			10%		100%
Semester 2 Courses			45%	45%		10%	100%
Electives and PE	Each elective and PE class is one MP (quarter) in length. The class grade equals 97.5% of the Final (Yearly) Grade.				2.5%		100%

**The above is subject to change at the discretion of the HS administration; midterms may be included as an option as well as finals may be excluded.

NOTE: The following grades will be utilized in special situations:

- P = Pass
- F = Fail
- I = Incomplete
- Z = Loss of credit

Grades of “P” will not be considered for Rank, GPA, and Honor Roll.

10. GRADE POINT AVERAGE

The following procedure is used to determine grade point average:

*Although the chart below illustrates rounded scores to 1/10th, the actual computation formula uses an unrounded true score.

Quality Points Regular Classes		Quality Points Honors/AP/CC Courses	
A+	= 4.3	A+	= 5.3
A	= 4.0	A	= 5.0
A-	= 3.667	A-	= 4.667
B+	= 3.333	B+	= 4.333
B	= 3.0	B	= 4.0
B-	= 2.667	B-	= 3.667
C+	= 2.333	C+	= 3.333
C	= 2.0	C	= 3.0
C-	= 1.667	C-	= 2.667
D+	= 1.3	D+	= 2.333
D	= 1.0	D	= 2.0
D-	= 0.667	D-	= 1.667
F	= 0	F	= 0

Grade Point Average = Quality Points divided by Potential Credits

Rank in class is determined by grade point average.

**Official rank will be determined upon calculation of final grades.

11. INCOMPLETES

If students are absent from school because of illness or if they do not have their work complete, teachers may give an incomplete for the marking period. Incomplete work must be made up within ten days of the end of the marking period. Teachers will change the incomplete grade to the appropriate grade within 2 weeks.

No Incompletes are given at the conclusion of the fourth marking period without the prior approval of the Principal.

12. GRADE REPORTING

Grades are available at all times and can be accessed by logging in to the [PowerSchool Parent Portal](#).

13. MARKING PERIOD DATES

The school year is divided into four marking periods. Each marking period grade has equal value. The marking period dates are listed on the [District Calendar](#).

14. HONOR ROLL

- A. High Honor Roll = marking period GPA of 3.7 or greater.
- B. Honor Roll = marking period GPA of 3.3000 through 3.6999
- C. Actual numeric value of GPA to four decimal places determines Honor Roll status; no rounding permitted. The following grade designations are “place holders” and are not included in Honor Roll calculations: Withdrew Passing (WP), Withdrew Failing (WF), Excused/Exempt (E), Pass (P), and Incomplete (I).
- D. Loss of credit due to absences (“Z” grades) excludes students from Honor Roll.

15. FINAL EXAMINATIONS

A final exam **will** be administered in **every** class, by their teacher, and on an **assigned** day. The following protocols will be observed:

- **All** classes will have a midterm/final exam. The only periods on a student’s schedule in which an exam is not administered is the student’s lunch and/or study hall period. The weights/percentages for classes and exams can be found under [#11 Computing Grades](#). Please see the high school district calendar for mid-term and final exam dates.
- All students are expected to take their exams on the scheduled days. Only students who have a **verifiable, medically excused** absence (MUST PROVIDE DOCTOR’S NOTE) will be allowed to reschedule an exam upon the approval of the Administration.
- The final exam schedule will be developed by the administrative team in the spring, and distributed approximately one month prior to the final exams
- There are four final exam days, each being an early dismissal day (students dismissed at 11:30).
- Each final exam day will consist of 2 sessions, each session is a period
- Students are encouraged to use lunch and study periods to study for upcoming finals and/or complete course work
- After taking a final, if a student wishes to be dismissed from their regularly scheduled lunch/study hall, they must provide a handwritten note from a parent/guardian in order to sign out.
- All students will be marked present or absent accordingly

NOTE - the protocols as listed may be subject to change by the administration at any time

16. P.E. MEDICAL EXCUSE

Students who cannot attend physical education courses and have the required doctor's written reason are excused from participating in physical education for the duration of the medical excuse. Medical excuses are not retroactive. Students may be required to attend the P.E. class and participate in limited P.E. activities and/or complete written work.

17. SUMMER SCHOOL

Every student who fails a course is strongly encouraged to go to summer school (not offered through the district). If a student does not attend summer school, it is possible that he/she may not be promoted with his/her class and may be ineligible for extra-curricular activities.

If your child anticipates having to attend summer school, please be aware of the following guidelines:

- A. All courses must be approved by their school counselor. ([POLICY #5700](#))
- B. Summer school credit will not be accepted without the “**HHS Summer School Review Course Approval**” form (available in Guidance) completed.
- C. Students may attend an approved summer school. Specific applications and approval forms for each school are required in addition to the HHS Summer School Review Course Approval form. A list of approved summer schools is available from Guidance.

18. SCHEDULING

While every effort is made to accommodate each student's course requests, it is sometimes necessary to make an elective change. You may be required to choose between courses if a conflict cannot be resolved. Specific requests for a teacher, lunch periods, PE classes, etc. will NOT be honored. If your child has scheduling errors, you may contact the Guidance Office during the last week of August to schedule an appointment. At the opening of school, clerical errors or omissions on schedules will be dealt with immediately. Other requests for schedule changes will be handled as soon as possible with seniors as first priority, then juniors, etc.

19. STUDENT RECORDS AND TRANSCRIPTS

Requests for student records/transcripts are to be processed through the Guidance Office. **Official** transcripts will only be given to the student or parent/guardian in a sealed envelope. **Unofficial** transcripts can be given to a student or parent/guardian at any time. Please allow at least ***one week*** prior to deadline dates.

IX. STUDENT ACTIVITIES

1. A variety of co-curricular areas are offered to students. All academic requirements and discipline/behavior requirements apply to athletics and to extra-curricular [The following athletics/activities are offered at Hopatcong High School:](#)

CO-CURRICULAR ACTIVITIES:

Cultural Fusion	Marching Band	National Junior Honor Society
Chorus	Quest	Grade 8 Class Officers
Fall Play	GSA Club	Esports
Jazz Band	Literary Magazine	Weight Room
Color Guard	Spring Musical	Yearbook

2. NATIONAL JUNIOR HONOR SOCIETY SELECTION PROCEDURE

See the [HHS NHS Website](#) for details.

3. STUDENT ELIGIBILITY FOR PARTICIPATION IN EXTRACURRICULAR ACTIVITIES AND ATHLETICS (applicable for 8th grade):

A student at Hopatcong High School must maintain the following requirements to be eligible for participation in all extracurricular activities:

- a. Must be passing at least six (6) classes (in grades 9 - 12 this is known as “30 credits”).
 - b. Students attending or participating in extracurricular activities *must be present in school* in order to participate in a school sponsored function that same day, unless attending a funeral, a doctor’s appointment. In those cases, students are expected to be present for a part of the school day within reason. For more clarification, please see the Principal or Coordinator of Student Discipline.
 - c. An absence on a Friday would result in a student being ineligible for the subsequent weekend sponsored events.
 - d. Please note - students on a Quarantine/Exclusion List are not present in school, and therefore ineligible to participate in extracurricular and school functions.
 - e. Any student suspended out of school will not be permitted to participate in any practice, game or school activity. This may be for either the immediate event that day, or week, or for the entire season depending upon the nature of the offense leading to the suspension.
 - f. Students are reminded that after school or Saturday detentions take precedence over all other activities.
2. High School activities are a privilege and will be extended only to those who demonstrate positive qualities of sportsmanship and good citizenship within the High School community.

4. SUBSTANCE ABUSE POLICY FOR ACTIVITIES IN ADDITION TO CODE OF CONDUCT PENALTIES

Any student found to be in possession of, under the influence of, admitting to the use of, or in the active presence of the use of alcohol, non-prescription drugs, tobacco or vaping products on or off school property will be subject to disciplinary action as per Board Policy [#5530](#) and [#5536](#).

HOPATCONG HIGH SCHOOL
ALMA MATER

HAIL HOPATCONG HIGH

On the shores of Lake Hopatcong,
 'Neath the bright blue sky,
 Here on Windsor we do gather
 At Hopatcong High.
Teachers, students work together
 All throughout the year.
Pride and spirit move us forward
 As we shout and cheer.
All the mem'ries stored and treasured
 After four long years,
These have been the times most cherished,
 And we hold them dear.
Memories of the joy and laughter,
 How the time did fly!
Hail to thee, our alma mater,
 Hail, Hopatcong High!